

Customer :

customer

Customer part :

customer part

Comment :

Comment

S1=1.93

S2=2.55

Tmax=459

Tp S2=498.0

PI=0.43

HI=120

Sample =1666.10

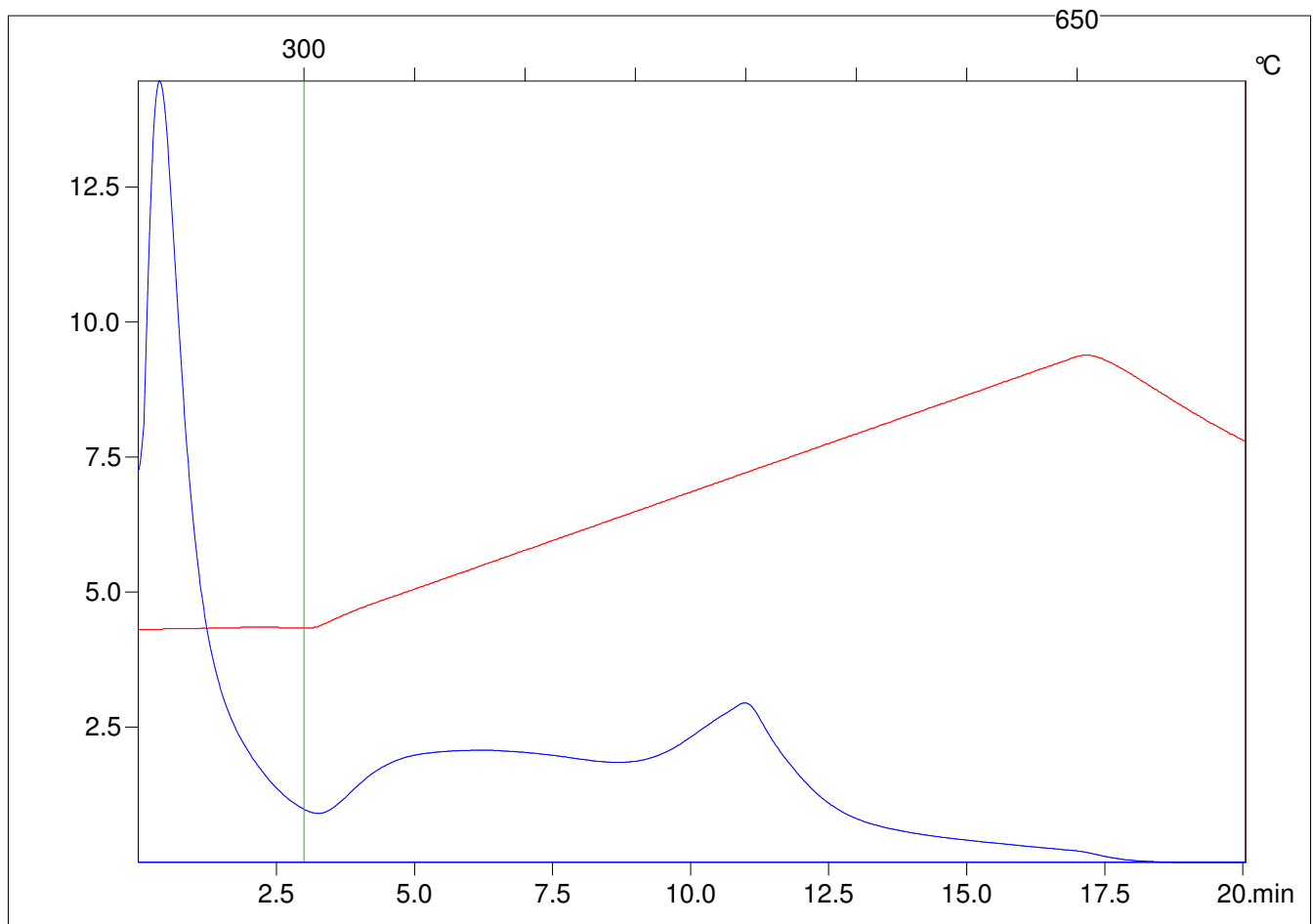
Method =Bulk Rock

Cycle=Basic

KFID(10*9)=1444

Qty =70.4

TOC=2.12



C:\VINC\PK1_1792\PK002.R00 : FID pyrolysis graphic

State

Pyro Status

Oxi Status